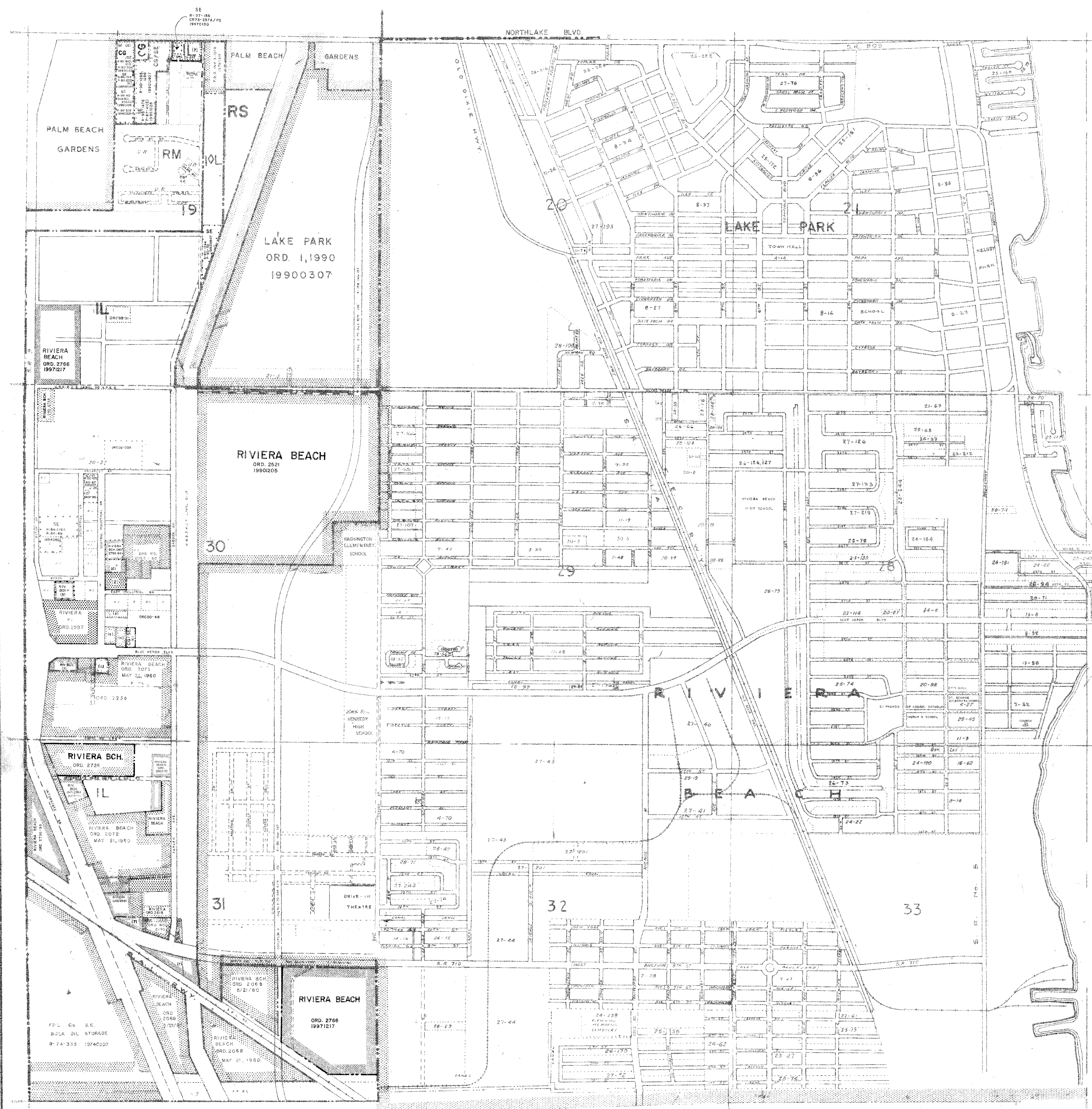


WORTH

L A K E

PORT OF PALM BEACH



| RESOLUTIONS | | ANNEXATIONS | |
|-------------|----------|-------------|---------------|
| CC 8-11-84 | 11-14-82 | ORD 2226 | RIVIERA BEACH |
| CC 8-11-84 | 11-14-82 | ORD 2054 | RIVIERA BEACH |
| CC 8-11-84 | 11-14-82 | ORD 2055 | RIVIERA BEACH |
| CC 8-11-84 | 11-14-82 | ORD 2056 | RIVIERA BEACH |
| CC 8-11-84 | 11-14-82 | ORD 2057 | RIVIERA BEACH |
| CC 8-11-84 | 11-14-82 | ORD 2058 | RIVIERA BEACH |
| CC 8-11-84 | 11-14-82 | ORD 2059 | RIVIERA BEACH |
| CC 8-11-84 | 11-14-82 | ORD 2060 | RIVIERA BEACH |
| CC 8-11-84 | 11-14-82 | ORD 2061 | RIVIERA BEACH |
| CC 8-11-84 | 11-14-82 | ORD 2062 | RIVIERA BEACH |
| CC 8-11-84 | 11-14-82 | ORD 2063 | RIVIERA BEACH |
| CC 8-11-84 | 11-14-82 | ORD 2064 | RIVIERA BEACH |
| CC 8-11-84 | 11-14-82 | ORD 2065 | RIVIERA BEACH |
| CC 8-11-84 | 11-14-82 | ORD 2066 | RIVIERA BEACH |
| CC 8-11-84 | 11-14-82 | ORD 2067 | RIVIERA BEACH |
| CC 8-11-84 | 11-14-82 | ORD 2068 | RIVIERA BEACH |
| CC 8-11-84 | 11-14-82 | ORD 2069 | RIVIERA BEACH |
| CC 8-11-84 | 11-14-82 | ORD 2070 | RIVIERA BEACH |
| CC 8-11-84 | 11-14-82 | ORD 2071 | RIVIERA BEACH |
| CC 8-11-84 | 11-14-82 | ORD 2072 | RIVIERA BEACH |
| CC 8-11-84 | 11-14-82 | ORD 2073 | RIVIERA BEACH |
| CC 8-11-84 | 11-14-82 | ORD 2074 | RIVIERA BEACH |
| CC 8-11-84 | 11-14-82 | ORD 2075 | RIVIERA BEACH |
| CC 8-11-84 | 11-14-82 | ORD 2076 | RIVIERA BEACH |
| CC 8-11-84 | 11-14-82 | ORD 2077 | RIVIERA BEACH |
| CC 8-11-84 | 11-14-82 | ORD 2078 | RIVIERA BEACH |
| CC 8-11-84 | 11-14-82 | ORD 2079 | RIVIERA BEACH |
| CC 8-11-84 | 11-14-82 | ORD 2080 | RIVIERA BEACH |
| CC 8-11-84 | 11-14-82 | ORD 2081 | RIVIERA BEACH |
| CC 8-11-84 | 11-14-82 | ORD 2082 | RIVIERA BEACH |
| CC 8-11-84 | 11-14-82 | ORD 2083 | RIVIERA BEACH |
| CC 8-11-84 | 11-14-82 | ORD 2084 | RIVIERA BEACH |
| CC 8-11-84 | 11-14-82 | ORD 2085 | RIVIERA BEACH |
| CC 8-11-84 | 11-14-82 | ORD 2086 | RIVIERA BEACH |
| CC 8-11-84 | 11-14-82 | ORD 2087 | RIVIERA BEACH |
| CC 8-11-84 | 11-14-82 | ORD 2088 | RIVIERA BEACH |
| CC 8-11-84 | 11-14-82 | ORD 2089 | RIVIERA BEACH |
| CC 8-11-84 | 11-14-82 | ORD 2090 | RIVIERA BEACH |
| CC 8-11-84 | 11-14-82 | ORD 2091 | RIVIERA BEACH |
| CC 8-11-84 | 11-14-82 | ORD 2092 | RIVIERA BEACH |
| CC 8-11-84 | 11-14-82 | ORD 2093 | RIVIERA BEACH |
| CC 8-11-84 | 11-14-82 | ORD 2094 | RIVIERA BEACH |
| CC 8-11-84 | 11-14-82 | ORD 2095 | RIVIERA BEACH |
| CC 8-11-84 | 11-14-82 | ORD 2096 | RIVIERA BEACH |
| CC 8-11-84 | 11-14-82 | ORD 2097 | RIVIERA BEACH |
| CC 8-11-84 | 11-14-82 | ORD 2098 | RIVIERA BEACH |
| CC 8-11-84 | 11-14-82 | ORD 2099 | RIVIERA BEACH |
| CC 8-11-84 | 11-14-82 | ORD 2100 | RIVIERA BEACH |

--- DISTRICT BOUNDARIES
 --- CORPORATE BOUNDARIES

The zoning category for the property indicated on this sheet may not be consistent with the property's future land use designation under the Palm Beach County Comprehensive Plan. Please contact the Palm Beach County Planning Division at 700 Australian Avenue, West Palm Beach, FL 33406, (561) 231-5300 to confirm the property's future land use designation and other relevant Comprehensive Plan requirements.

PALM BEACH COUNTY, FLORIDA
OFFICIAL ZONING DISTRICT MAP
 Scale 1" = 600' approx. Date _____
 Quadrant 42 43C Sheet No. 14